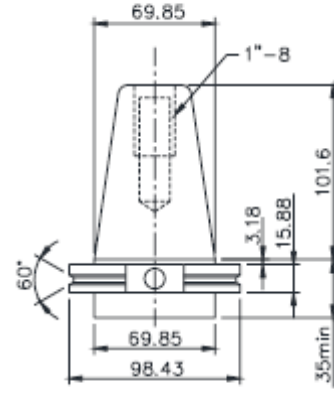
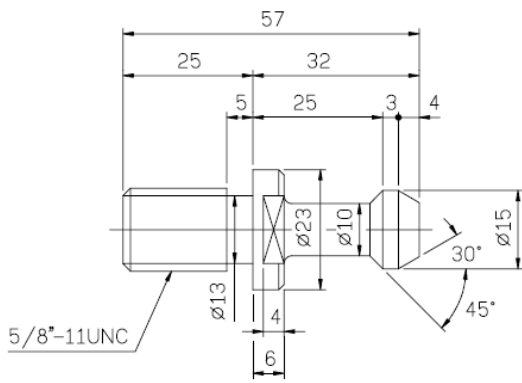


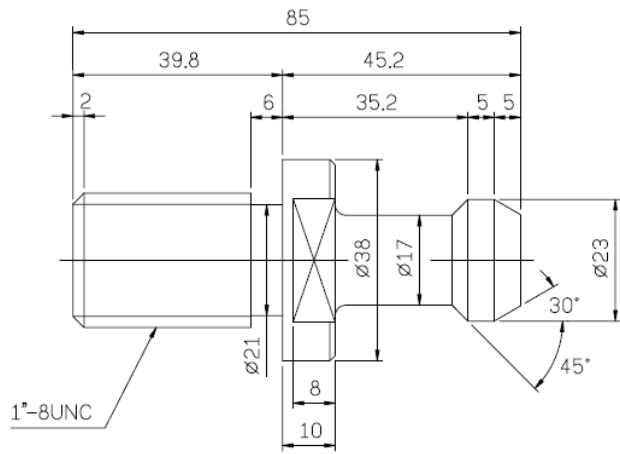
CAT40 TAPER (ANSI)



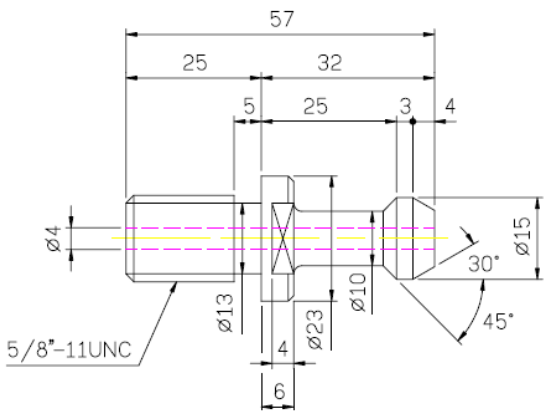
CAT50 TAPER (ANSI)



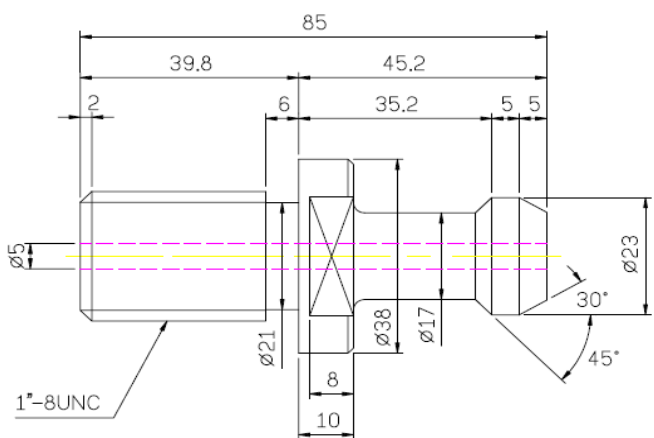
CAT40 Pull Stud



CAT50 Pull Stud



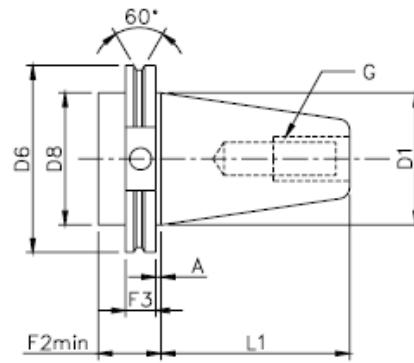
CAT40 CTS Pull Stud



CAT50 CTS Pull Stud

CAT SHANK TAPER (ANSI B5.50-78)

For SV-2412/2412S only

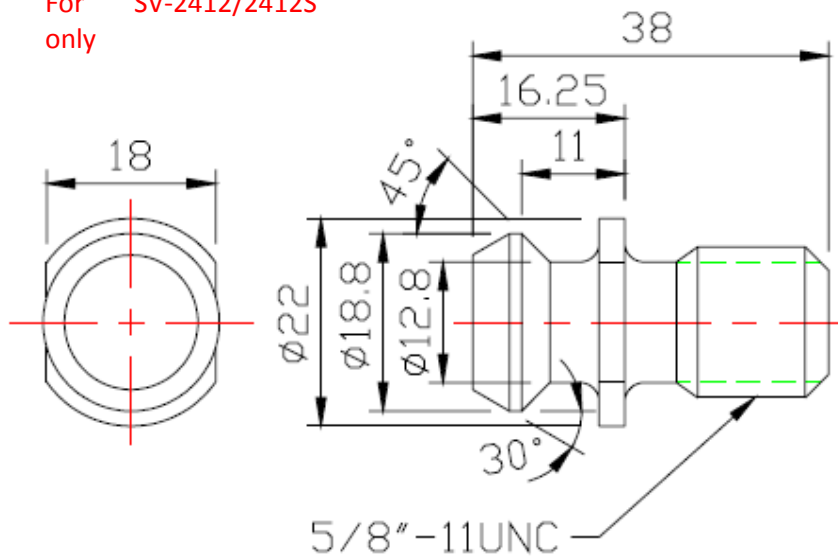


UNIT: inch
(mm)

	D1	D6	D8	L1	F2	F3	A	G
CAT40	1.750 (44,45)	2.500 (63,05)	1.750 (44,45)	2.687 (68,25)	1.375 (35,00)	.750 (19,05)	.125 (3,18)	5/8-11 thread

CAT40 STUD

For SV-2412/2412S
only



Model	Spindle Taper	Pull Stud
SDC-8045	CAT40/CAT50(ANSI)	CAT
SV-2412	CAT40(ANSI B5.50-78)	CAT
SV-2412S	CAT40(ANSI B5.50-78)	CAT
SV-4020	CAT40(ANSI)	CAT
SV-4323	CAT40(ANSI)	CAT
SV-4328ST	CAT40(ANSI)	CAT
SV-6030	CAT40/CAT50(ANSI)	CAT
SVG-4323	CAT40/CAT50(ANSI)	CAT
SVG-5127	CAT50(ANSI)	CAT
SVG-6335	CAT50(ANSI)	CAT
SVG-8540	CAT50(ANSI)	CAT